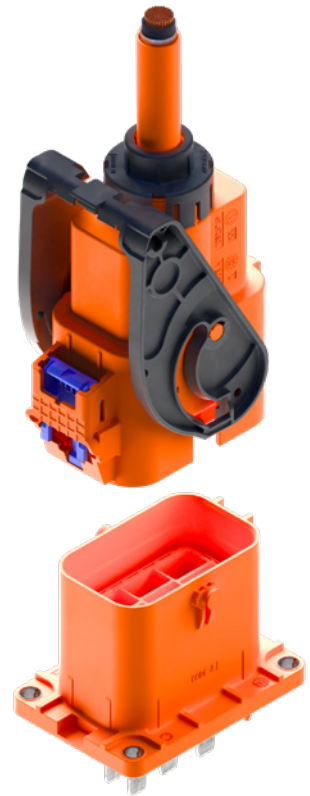


HV CLASS 3 LSK 8 v.2

Waterproof sealed connection system

- ⊕ HVIL integration
- ⊕ Touch protection
- ⊕ Multiple codings
- ⊕ With CPA



APPLICATIONS

- On-Board Charger (OBC)

FEATURES



Current Carrying Capacity

65 A continuous
@ 80 °C / 6 mm²



Sealing Protection

IP67, IP6K9K



Voltage Range

600 V @ 4000 m ASL



EMI Shielding Class

40 dB (0.5 - 1.7 MHz)
30 dB (70 - 108 MHz)



Temperature

-40 °C to 140 °C



Touch Protection

IPxxB



Cable Cross-Section

6 mm² (ES91110-14)



Validation acc. to

LV-215
ES91500-20

we **C**onnect

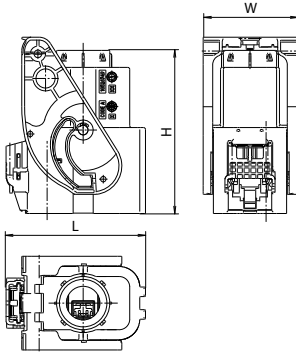
Experience how we connect the global automotive industry with high performance connector systems.

www.kostal-kontakt-systeme.com

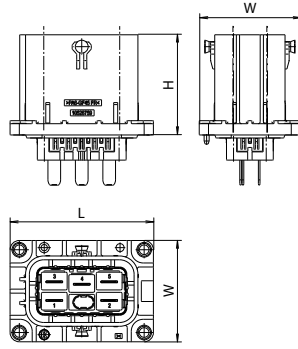


DIMENSIONS

Receptacle Housing



Tab Header



TECHNICAL DATA

Receptacle Housing with CPA

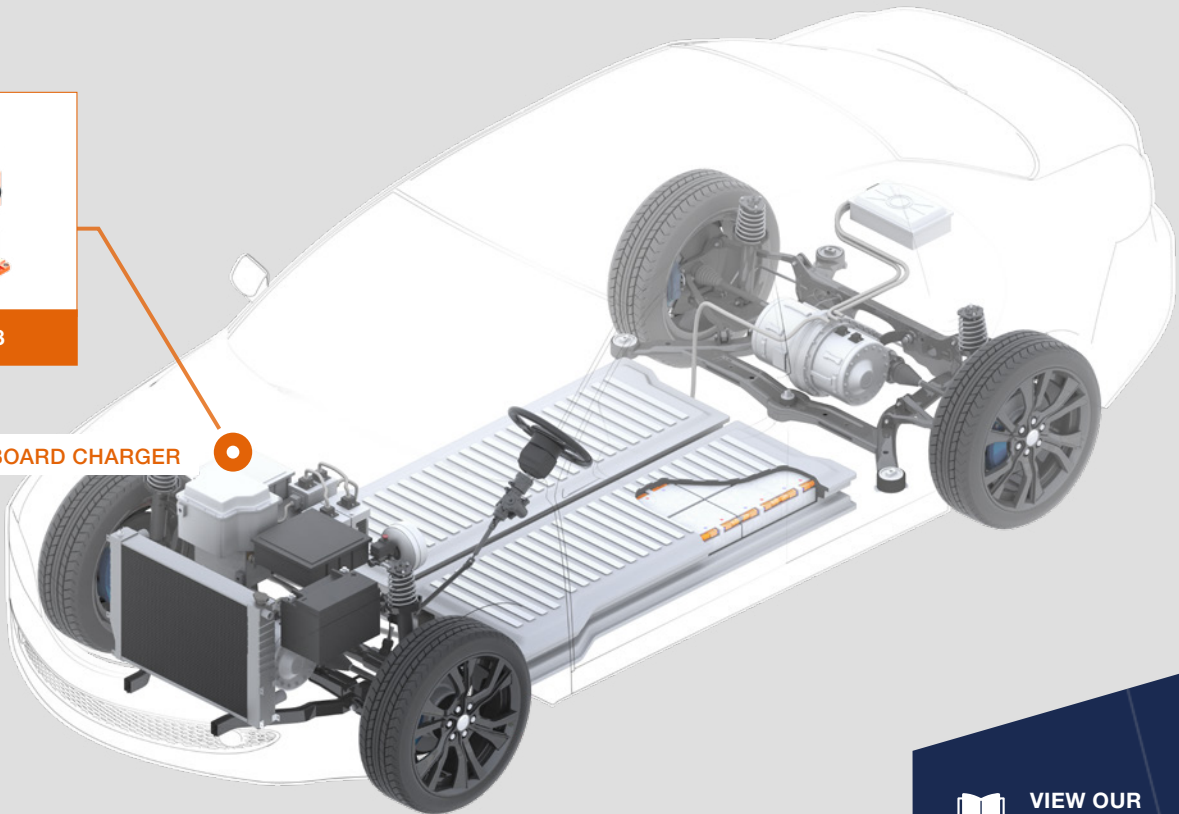
Tab Header

Cavities	PN Code A	Dimensions L x H x W (mm)	PN Code A	Dimensions L x H x W (mm)
5 + 2	10526748	73 x 85.4 x 49.05	10526758	71.25 x 49.8 x 50.35



LSK 8

ON-BOARD CHARGER



COMPATIBLE WITH



LSK 8



VIEW OUR
PRODUCT CATALOGUE



CONTACT US:
kks_portfolio@kostal.com