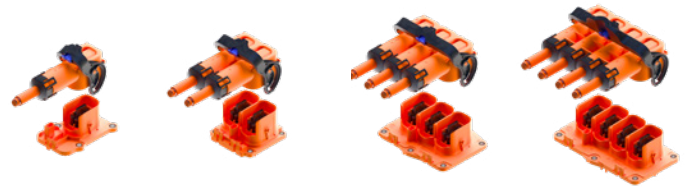


# HV CLASS 4

# PLK 14,5 KHV 600

A family of connectors for a variety of applications.

- ⊕ Water proof sealed connection system
- ⊕ HVIL integration
- ⊕ Touch protection
- ⊕ Multiple codings
- ⊕ Header includes Tab



## APPLICATIONS

- E-Motor
- HV-Battery
- Inverter
- On-Board Charger (OBC)

## FEATURES



**Current Carrying Capacity**  
250 A continuous  
@ 80 °C / 50 mm<sup>2</sup>



**EMI Shielding Class**  
65 dB (0.1 - 40 MHz)



**Voltage Range**  
600 V @ 4200 m ASL



**Sealing Protection**  
IP67, IP6K9K



**Temperature**  
-40 °C to 140 °C



**Touch Protection**  
IPxxB / IPxxD



**Cable Cross-Section**  
16 mm<sup>2</sup> – 50 mm<sup>2</sup>



**Validation acc. to PSA**  
B21  
70 50 Index D

we **connect**

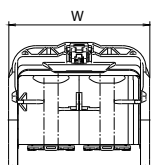
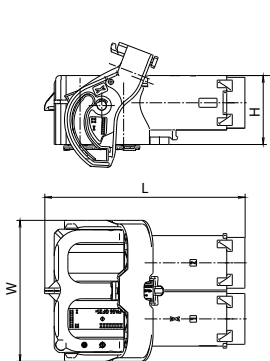
Experience how we connect the global automotive industry with high performance connector systems.

[www.kostal-kontakt-systeme.com](http://www.kostal-kontakt-systeme.com)

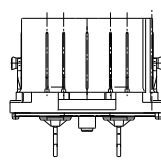
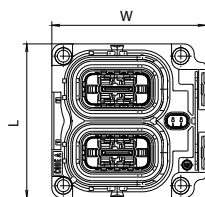
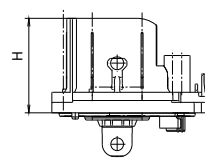


## DIMENSIONS

Receptacle Housing



Tab Header



## TECHNICAL DATA

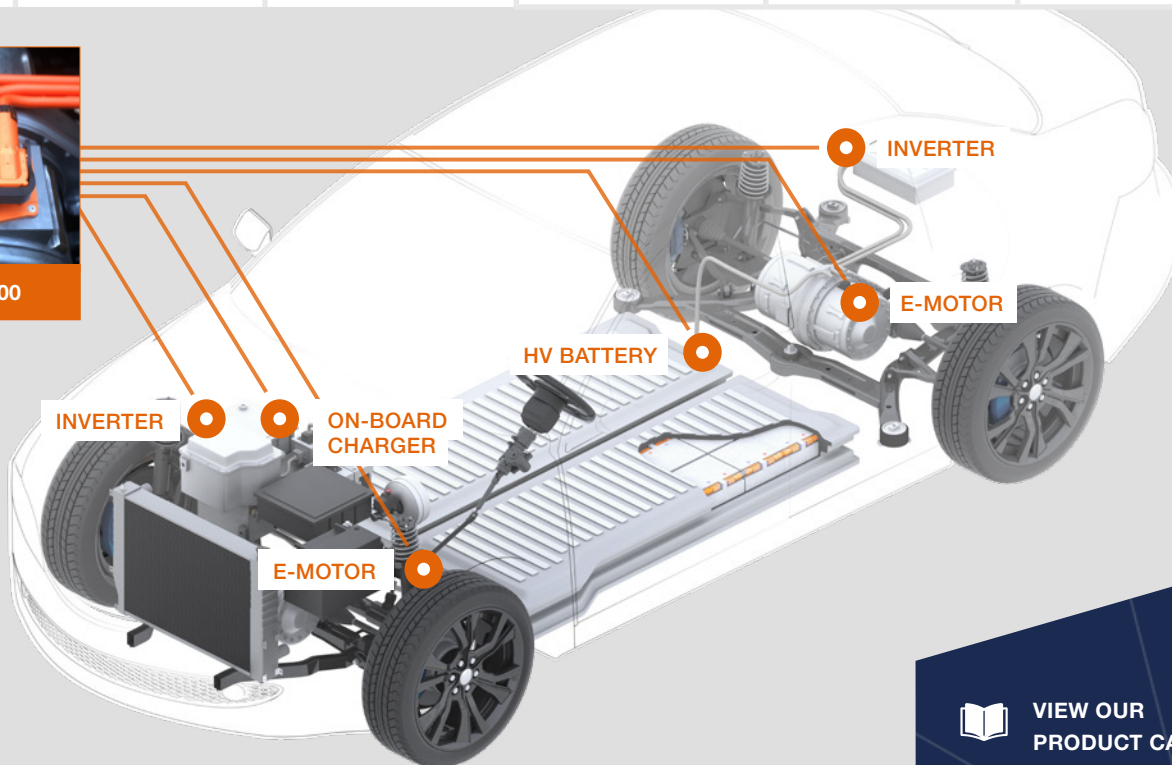
Receptacle with CPA

Tab Header

Cavities	PN Code A	Dimensions L x H x W (mm)	PN Code A	Dimensions L x H x W (mm)	Other Codings
1	10022774	110 x 41 x 47	10136406	96 x 42 x 65	-
2	10019942	110 x 41 x 78	10338029	75 x 46 x 75	B
3	10019158	110 x 41 x 109	10022433	100 x 42 x 122	B
4	10022773	110 x 41 x 140	10140397	100 x 42 x 153	-



KHV 600



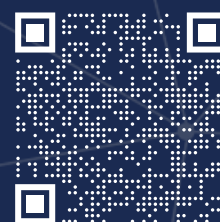
## COMPATIBLE WITH



PLK 14,5



VIEW OUR  
PRODUCT CATALOGUE



CONTACT US:  
kks\_portfolio@kostal.com