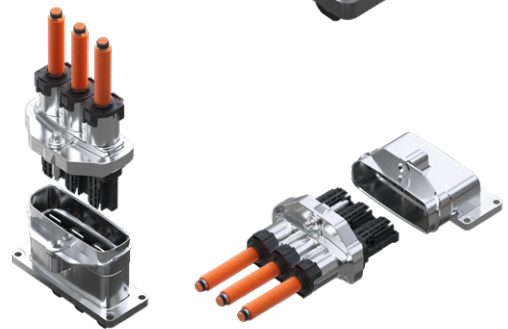


HV CLASS 4

PLK 14,5 KHV 850

Sealed. Shielded.

- ⊕ Touch protection
- ⊕ Multiple codings
- ⊕ Die-casted, potted and overmolded
- ⊕ Utilizing our proven PLK 14,5 Terminal



APPLICATIONS

- Commercial vehicle market
- High voltage / high current
- Inverter / electric drivetrains

FEATURES



Current Carrying Capacity
250 A continuous
@ 80 °C / 50 mm²



Sealing Protection
IP67, IP6K9K



Voltage Range
850 V DC @ 5000 m ASL



Touch Protection
IPxxB / IPxxD



Temperature
-40 °C to 105 °C



Validation acc. to
CV (Comercial Vehicle)
spec.



Cable Cross-Section
50 mm²

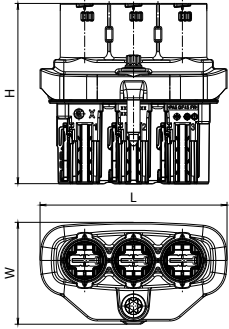
Experience how we connect the global automotive industry with high performance connector systems.

www.kostal-kontakt-systeme.com

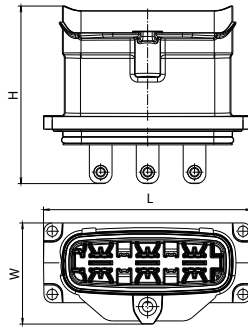


DIMENSIONS

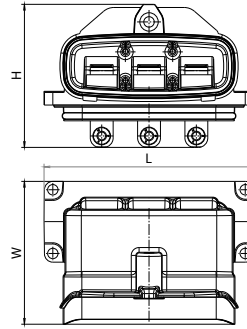
Receptacle Housing



Tab Header 180 °



Tab Header 90 °



TECHNICAL DATA

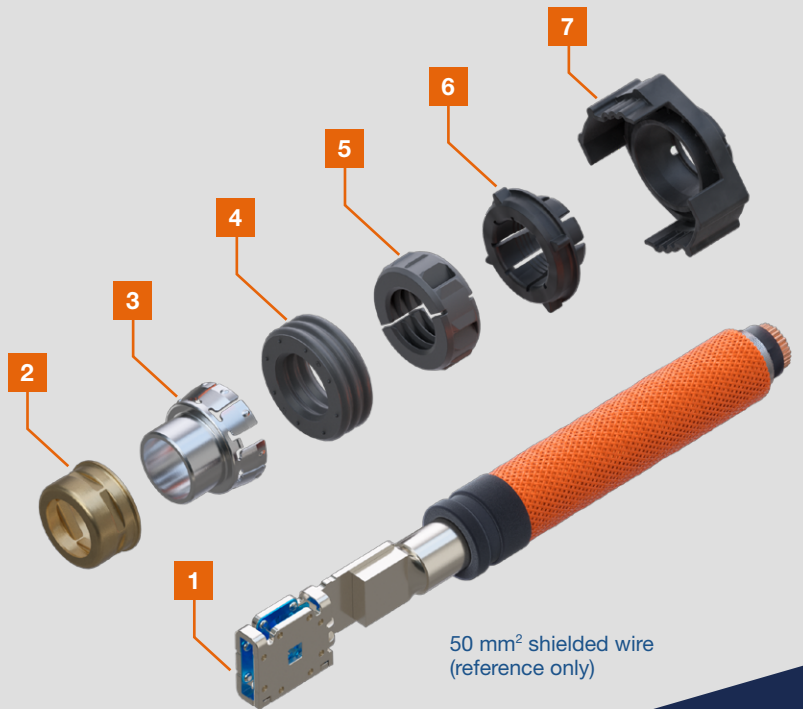
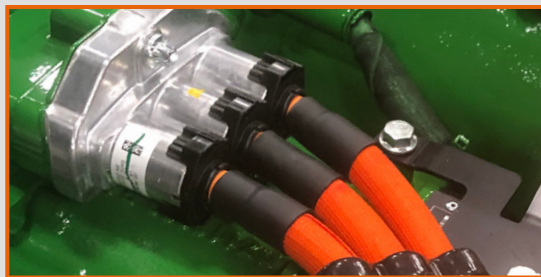
Receptacle Housing with CPA

Tab Header 180 °

Tab Header 90 °

Cavities	PN Code A	Dimensions L x H x W (mm)	PN Code A	Dimensions L x H x W (mm)	PN Code A	Dimensions L x H x W (mm)	Other Codings
3	10506727	115 x 61 x 111	10540523	133 x 114 x 65	10540517	133 x 91 x 91	B, C, D

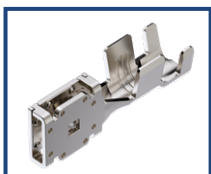
Number (pcs)	Name
1	PLK 14,5 terminal (resistance weld pad 15 x 20 mm)
2	Spacer Sleeve (50 mm)
3	Clamp Sleeve (50 mm) (crown)
4	SWS (Single Wire Seal) (50 mm)
5	KHV 850 Retainer Cap Bayonet 50 mm ²
6	KHV 850 Cable Clamp 1 50 mm ²
7	KHV 850 Cable Clamp 2 50 mm ²



50 mm² shielded wire (reference only)



COMPATIBLE WITH



Terminal PLK 14,5



VIEW OUR PRODUCT CATALOGUE



CONTACT US:
kks_portfolio@kostal.com