

Oil Performance Connector LKS 1,5

Sealed. Reliable. Proven.

- ⊕ Robust connectors
- ⊕ Multiple configurations available
- ⊕ Over 30 years of experience with sealed performance connectors
- ⊕ Resistant against high vibrations and aggressive transmission fluids
- ⊕ Single part traceability



APPLICATIONS

- Inside sealed systems or enclosures
- Low voltage transfer for power & signal within engine / transmission
- Suitable for additional device systems

FEATURES



Current Carrying Capacity

19 A continuous
@ 80 °C / 1.0 mm²



Cable Cross-Section

0.5 mm² - 1.0 mm²



Voltage Range

12 V



Validation acc. to

USCAR 2-7
LV 214
ISO 16750



Temperature

-40 °C to 130 °C
(up to 150 °C short term)

we **C**onnect

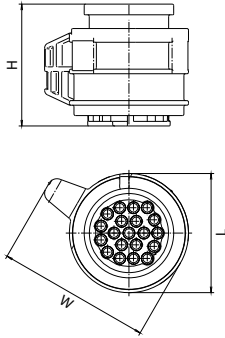
Experience how we connect the global automotive industry with high performance connector systems.

www.kostal-kontakt-systeme.com

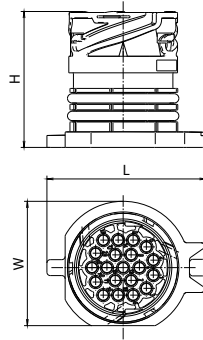


DIMENSIONS

Socket Housing



Pin Housing



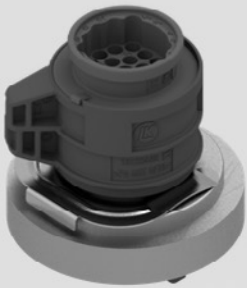
TECHNICAL DATA

Socket Housing

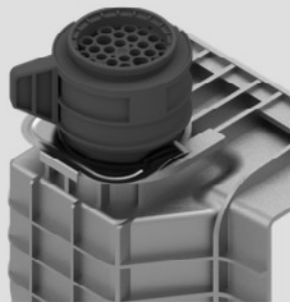
Pin Housing

Cavities	PN Code	Dimensions L x H x W (mm)	PN Code	Dimensions L x H x W (mm)
16	09430010	39x 42.7 x 50.3	09330004	47.7 x 41 x 37.4
20	09432001	39 x 39.9 x 50.3	09332003	48 x 41 x 43.8
26	10108979	48 x 35.4 x 63	10103844	47.7 x 43.8 x 50.85

- Round oil and water sealed pass-through connector and socket housing as counterpart
- Fixation to housing via metal clamp
- Connection of the pin and socket housing via bayonet
- Different connection types for round pin terminals: Crimping, Riveting, Soldering, Welding



Battery Junction Box



Inverter



Transmission



COMPATIBLE WITH



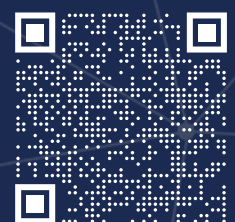
LKS 1,5



RK 1,5



VIEW OUR
PRODUCT CATALOGUE



CONTACT US:
kks_portfolio@kostal.com