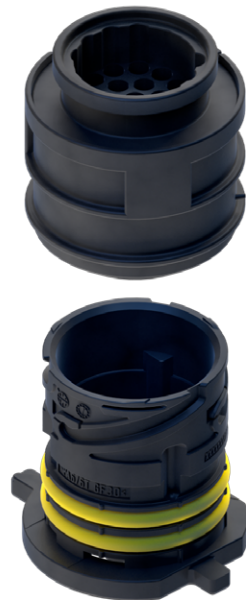


# OIL PERFORMANCE CONNECTOR

## LKS 1,5

Sealed. Reliable. Proven.

- ⊕ Robust Connectors
- ⊕ Multiple configurations available
- ⊕ Over 30 years of experience with sealed performance Connectors
- ⊕ Resistant against high vibrations and aggressive transmission fluids
- ⊕ Single part traceability



### APPLICATIONS

- Inside sealed systems or enclosures
- Low voltage transfer for power & signal within engine / transmission
- Suitable for additional device systems

### FEATURES



**Current Carrying Capacity**  
19 A continuous  
@ 80 °C / 1.0 mm<sup>2</sup>



**Cable Cross-Section**  
0.5 mm<sup>2</sup> - 1.0 mm<sup>2</sup>



**Voltage Range**  
12 V



**Validation acc. to**  
USCAR 2-7  
LV 214  
ISO 16750



**Temperature**  
-40 °C to 130 °C  
(up to 150 °C short term)

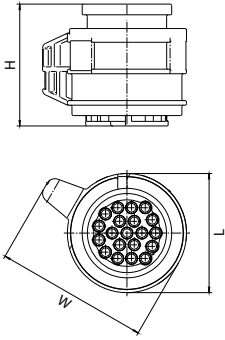
Experience how we connect the global automotive industry with high performance connector systems.

[www.kostal-kontakt-systeme.com](http://www.kostal-kontakt-systeme.com)

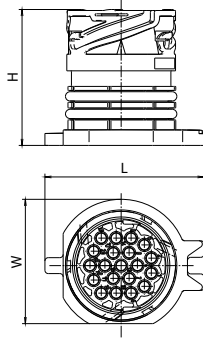


## DIMENSIONS

Socket Housing



Pin Housing



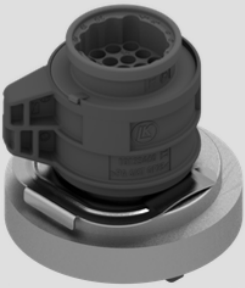
## TECHNICAL DATA

Socket Housing

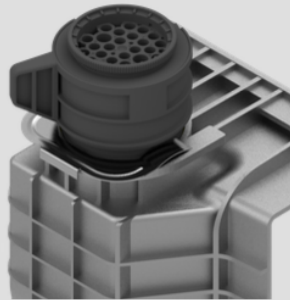
Pin Housing

Cavities	PN Code	Dimensions L x H x W (mm)	PN Code	Dimensions L x H x W (mm)
16	09430010	39x 42.7 x 50.3	09330004	47.7 x 41 x 37.4
20	09432001	39 x 39.9 x 50.3	09332003	48 x 41 x 43.8
26	10108979	48 x 35.4 x 63	10103844	47.7 x 43.8 x 50.85

- Round oil and water sealed pass-through connector and socket housing as counterpart
- Fixation to housing via metal clamp
- Connection of the pin and socket housing via bayonet
- Different connection types for round pin terminals: Crimping, Riveting, Soldering, Welding



Battery Junction Box



Inverter



Transmission



## COMPATIBLE WITH



Terminal LKS 1,5



Terminal RK 1,5



VIEW OUR  
PRODUCT CATALOGUE



CONTACT US:  
kks\_portfolio@kostal.com