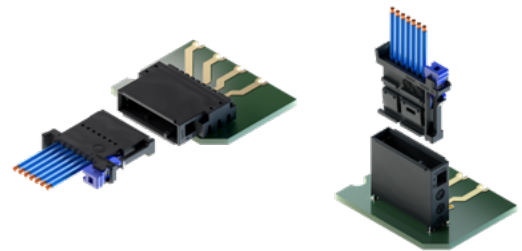
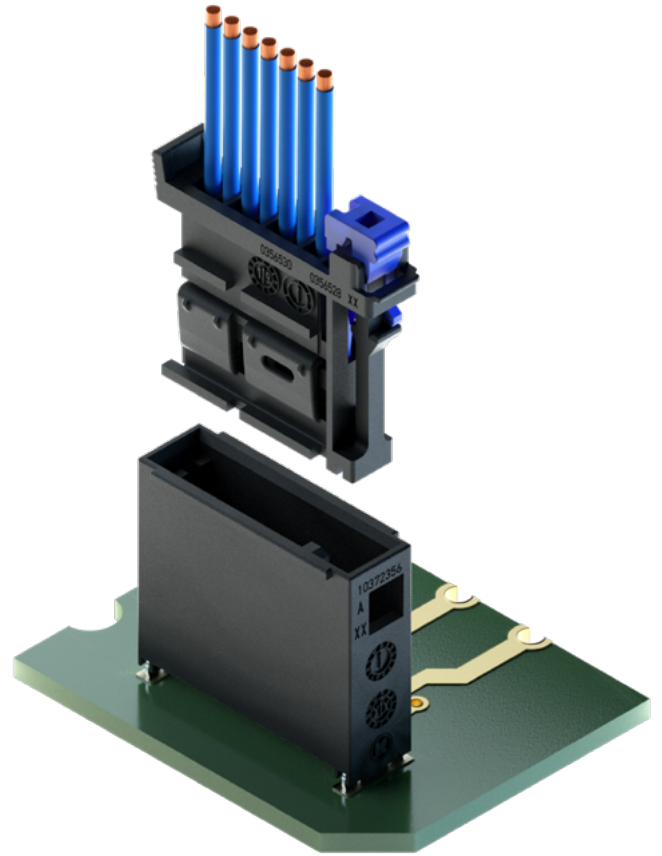


LOW VOLTAGE CONNECTOR MK 0,5

Smallest in size.
Biggest in application.

- ⊕ Complete system approach – Connector, Header and Terminal
- ⊕ Compatible to main industry standard cavity
- ⊕ Approved for automated production (blockloading)



APPLICATIONS

- Automotive miniaturization applications
- Entertainment system
- Head & rear lamps

FEATURES



Current Carrying Capacity
3 A continuous
@ 80 °C / 0.35 mm²



Pitch
1.8 mm



Temperature
max. 170 °C (Ag) Terminal
max. 130 °C Housing



Designed acc.
DIN TS 72036



Cable Cross-Section
0.13-0.35 mm²

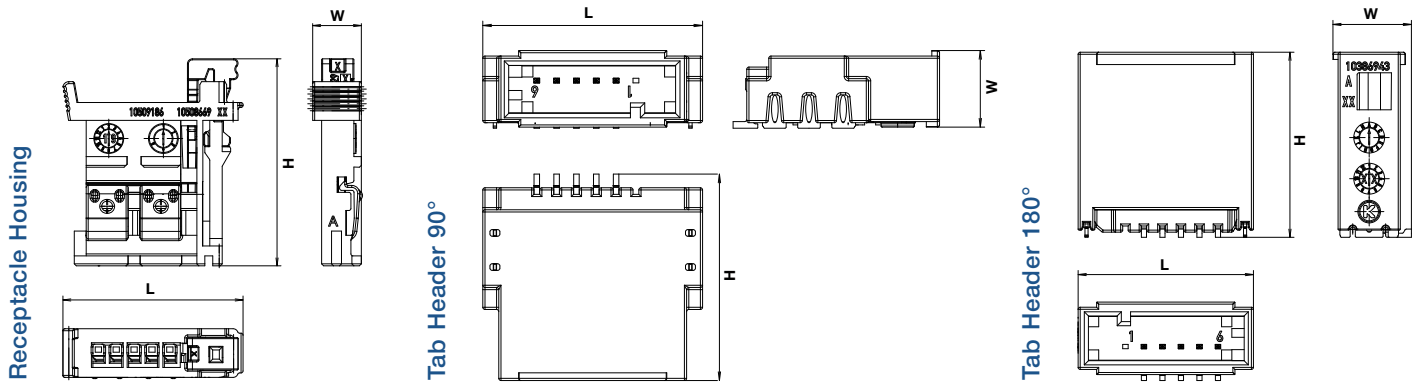


Validation acc. to
LV 214
USCAR

Experience how we connect
the global automotive industry
with high performance
connector systems.

www.kostal-kontakt-systeme.com

DIMENSIONS



TECHNICAL DATA

Receptacle Housing with CPA – 1-row

Cavities	PN Code A	Dimensions L x H x W (mm)
3	10509196	14.54 x 20.85 x 4.9
4	10509195	16.34 x 20.85 x 4.9
5	10509186	18.14 x 20.85 x 4.9
6	*	19.94 x 20.85 x 4.9
7	10356530	21.74 x 20.85 x 4.9
8	*	23.54 x 20.85 x 4.9
9	10509159	25.34 x 20.85 x 4.9
10	*	27.14 x 20.85 x 4.9

Tab Header 90°

PN Code A	Dimensions L x H x W (mm)
*	16.35 x 18.74 x 7.05
10447307	18.15 x 18.74 x 7.05
10447315	19.95 x 18.74 x 7.05
*	21.75 x 18.74 x 7.05
10447286	23.55 x 18.74 x 7.05
*	25.35 x 18.74 x 7.05
*	27.15 x 18.74 x 7.05
*	28.95 x 18.74 x 7.05

Tab Header 180°

PN Code A	Dimensions L x H x W (mm)	Other Codings
10434455	13.45 x 18 x 7.63	B-C
10398971	15.25 x 18 x 7.63	B-C
10386903	17.05 x 18 x 7.63	B-C
*	18.85 x 18 x 7.63	B-C
12055090	20.65 x 18 x 7.63	B-C
*	22.45 x 18 x 7.63	B-C
10384360	24.25 x 18 x 7.63	B-C
*	26.05 x 18 x 7.63	B-C

Receptacle Housing with CPA – 2-row

Cavities	PN Code A	Dimensions L x H x W (mm)
2 x 3	10339681	13.97 x 19.7 x 7.2
2 x 4	10339697	15.77 x 19.7 x 7.2
2 x 5	10339701	17.57 x 19.7 x 7.2
2 x 6	10339703	19.37 x 19.7 x 7.2
2 x 7	10339705	21.17 x 19.7 x 7.2
2 x 8	*	22.97 x 19.7 x 7.2
2 x 9	10339709	24.77 x 19.7 x 7.2
2 x 10	10337275	26.57 x 19.7 x 7.2

Tab Header 90°

PN Code A	Dimensions L x H x W (mm)
*	15.3 x 19.6 x 10.2
*	17.1 x 19.6 x 10.2
10529561	18.9 x 19.6 x 10.2
10448038	20.7 x 19.6 x 10.2
10459360	22.5 x 19.6 x 10.2
*	24.3 x 19.6 x 10.2
10459790	26.1 x 19.6 x 10.2
*	27.9 x 19.6 x 10.2

Tab Header 180°

PN Code A	Dimensions L x H x W (mm)	Other Codings
10447537	13.1 x 18 x 10.2	B-C
10447510	14.9 x 18 x 10.2	B-C
10447545	16.7 x 18 x 10.2	B-C
*	18.5 x 18 x 10.2	B-C
10447553	20.3 x 18 x 10.2	B-C
*	22.1 x 18 x 10.2	B-C
*	23.9 x 18 x 10.2	B-C
10447563	25.7 x 18 x 10.2	B-C

*Ready for tooling

COMPATIBLE WITH



Terminal MK 0,5



VIEW OUR
PRODUCT CATALOGUE



CONTACT US:
kks_portfolio@kostal.com