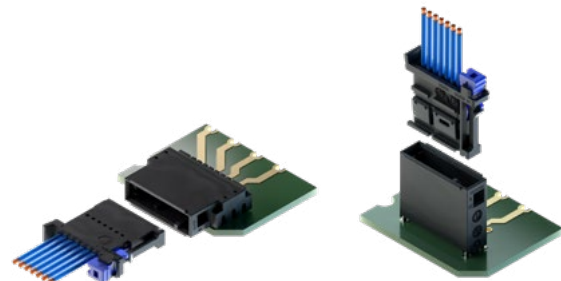
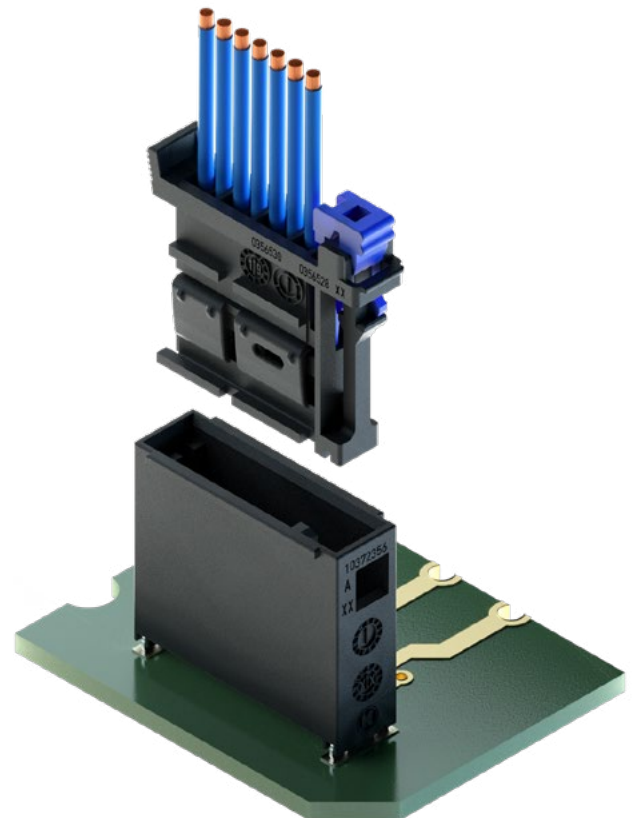


MK 0,5

Smallest in size.
Biggest in application.

- ⊕ Complete system approach – Connector, Header and Terminal
- ⊕ Compatible to main industry standard cavity
- ⊕ Approved for automated production (blockloading)



APPLICATIONS

- Automotive Miniaturization Applications
- Entertainment System
- Head & Rear Lamps

FEATURES



Current Carrying Capacity

3 A continuous
@ 80 °C / 0.35 mm²



Temperature

max. 170 °C (Ag) Terminal
max. 130 °C Housing



Cable Cross-Section
0.13-0.35 mm²



Pitch
1.8 mm



Designed acc.
DIN TS 72036



Validation acc. to
LV 214
USCAR

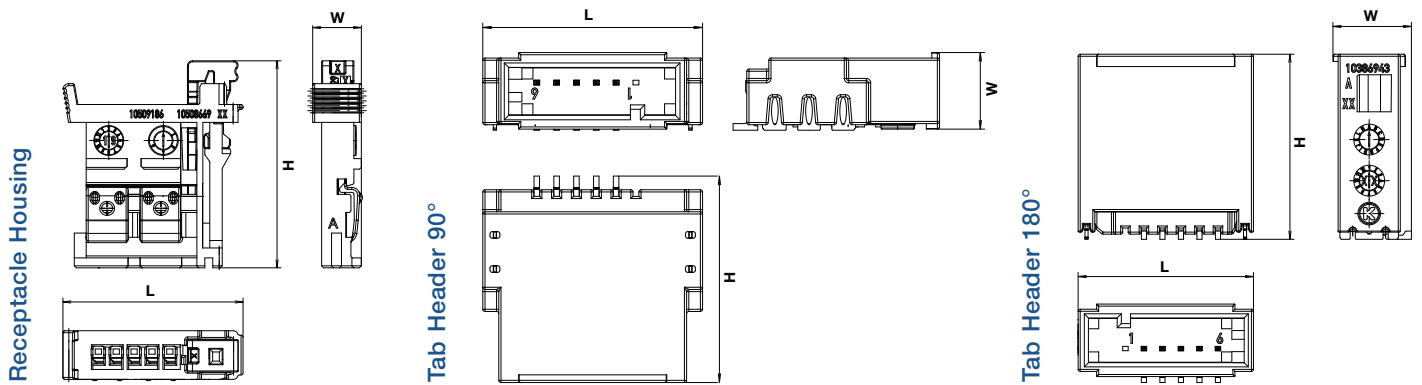
we **connect**

Experience how we connect the global automotive industry with high performance connector systems.

www.kostal-kontakt-systeme.com



DIMENSIONS



TECHNICAL DATA

Receptacle Housing with CPA – 1-row

Cavities	PN Code A	Dimensions L x H x W (mm)
3	10509196	14.54 x 20.85 x 4.9
4	10509195	16.34 x 20.85 x 4.9
5	10509186	18.14 x 20.85 x 4.9
6	*	19.94 x 20.85 x 4.9
7	10356530	21.74 x 20.85 x 4.9
8	*	23.54 x 20.85 x 4.9
9	10509159	25.34 x 20.85 x 4.9
10	*	27.14 x 20.85 x 4.9

Tab Header 90°

PN Code A	Dimensions L x H x W (mm)
*	16.35 x 18.74 x 7.05
10447307	18.15 x 18.74 x 7.05
10447315	19.95 x 18.74 x 7.05
*	21.75 x 18.74 x 7.05
10447286	23.55 x 18.74 x 7.05
*	25.35 x 18.74 x 7.05
*	27.15 x 18.74 x 7.05
*	28.95 x 18.74 x 7.05

Tab Header 180°

PN Code A	Dimensions L x H x W (mm)	Other Codings
10434455	13.45 x 18 x 7.63	B-C
10398971	15.25 x 18 x 7.63	B-C
10386903	17.05 x 18 x 7.63	B-C
*	18.85 x 18 x 7.63	B-C
12055090	20.65 x 18 x 7.63	B-C
*	22.45 x 18 x 7.63	B-C
10384360	24.25 x 18 x 7.63	B-C
*	26.05 x 18 x 7.63	B-C

Receptacle Housing with CPA – 2-row

Cavities	PN Code A	Dimensions L x H x W (mm)
2 x 3	10339681	13.97 x 19.7 x 7.2
2 x 4	10339697	15.77 x 19.7 x 7.2
2 x 5	10339701	17.57 x 19.7 x 7.2
2 x 6	10339703	19.37 x 19.7 x 7.2
2 x 7	10339705	21.17 x 19.7 x 7.2
2 x 8	*	22.97 x 19.7 x 7.2
2 x 9	10339709	24.77 x 19.7 x 7.2
2 x 10	10337275	26.57 x 19.7 x 7.2

Tab Header 90°

PN Code A	Dimensions L x H x W (mm)
*	15.3 x 19.6 x 10.2
*	17.1 x 19.6 x 10.2
10529561	18.9 x 19.6 x 10.2
10448038	20.7 x 19.6 x 10.2
10459360	22.5 x 19.6 x 10.2
*	24.3 x 19.6 x 10.2
10459790	26.1 x 19.6 x 10.2
*	27.9 x 19.6 x 10.2

Tab Header 180°

PN Code A	Dimensions L x H x W (mm)	Other Codings
10447537	13.1 x 18 x 10.2	B-C
10447510	14.9 x 18 x 10.2	B-C
10447545	16.7 x 18 x 10.2	B-C
*	18.5 x 18 x 10.2	B-C
10447553	20.3 x 18 x 10.2	B-C
*	22.1 x 18 x 10.2	B-C
*	23.9 x 18 x 10.2	B-C
10447563	25.7 x 18 x 10.2	B-C

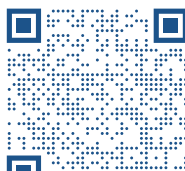
*Ready for tooling



COMPATIBLE WITH



Terminal MK 0,5



VIEW OUR CATALOG

All information in the technical drawings in millimeters. Part numbers, specifications, dimensions and performance data in this catalog are for general reference only and are subject to change without notice. To verify product information, please contact your local KOSTAL Kontakt System representative.

Date Published: 06/2023