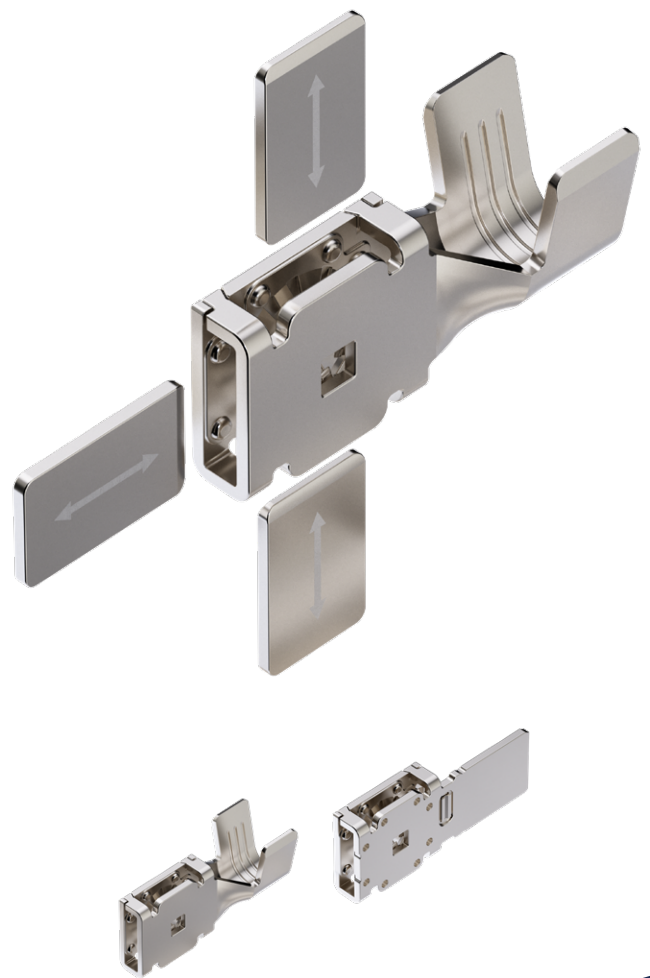


TERMINAL

PLK 14,5

Powerful and trusted reliability.

- ⊕ Three mating directions (90° / 180° / 270°) with one terminal and one part number
- ⊕ Crimp and welding versions available
- ⊕ Proven over many years for high current applications



APPLICATIONS

- High current applications
- Integrated charging control units (ICCU)
- Onboard charger (OBC)
- Power Distribution Units (PDU)
- Inverters
- Busbar connections

FEATURES



Current Carrying Capacity
320 A / 280 A
at 20 °C / 80 °C



Active Contact Zones
24



Operating Temperature
Max. 170 °C



Mating Force / Unmating Force
max. 32 N / max. 22 N



Wire Size Range
12 - 50 mm² crimp
70 mm² welding



No. of Cycles (mating / unmating)
50 (Ag)



Mating Terminal
14.5 mm x 1.8 mm



Material / Surface
- Body: Cu / Sn
- Lamina: Cu low alloyed / Ag

Experience how we connect the global automotive industry with high performance connector systems.

www.kostal-kontakt-systeme.com

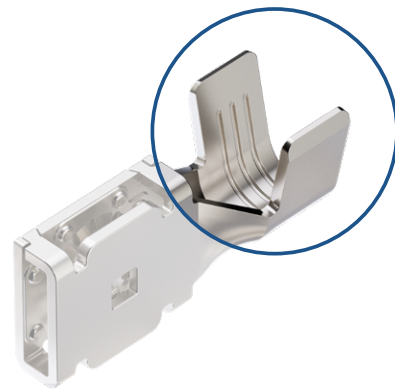


VALIDATION

- Released at **all major OEM's**
- Robust KOSTAL system proven in **high current applications**
- Accepted at major harness makers
- Meets req. of **DIN/TS 70214 (LV spec.), USCAR-2**



CONNECTION VARIETIES



✓ Crimp



✓ Resistance welding

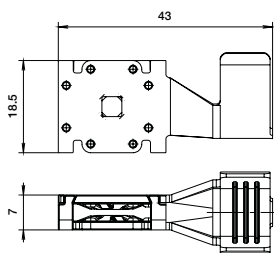


✓ Ultrasonic welding

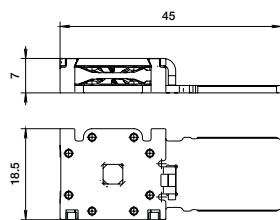


DIMENSIONS

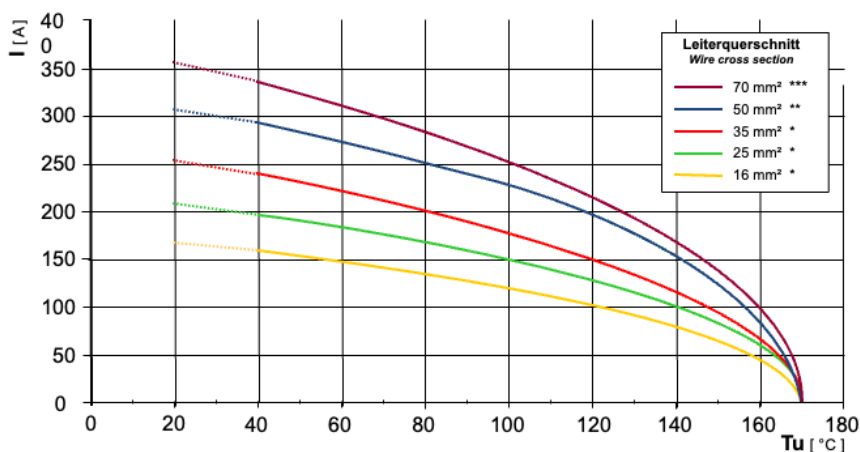
Crimp
10539968



Welding
10142491 / 10526319



TECHNICAL DATA



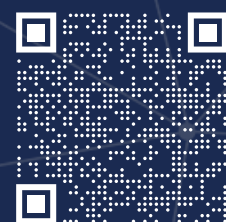
COMPATIBLE WITH



Tab PLK 14,5



VIEW OUR
PRODUCT CATALOGUE



CONTACT US:
kks_portfolio@kostal.com